



OUTDOOR

■ COLLECTIONS

2CM PORCELAIN PAVERS



INDEX ■

2CM OUTDOOR COLLECTIONS

- 2 / BENEFITS OF PORCELAIN
- 3 / PRODUCT PERFORMANCE
- 4 / APPLICATIONS

48X48 COLLECTIONS:

- 8 / ASPHALT
- 14 / STONELAND

24X24 & 24X48 COLLECTIONS:

- 22 / ARK
- 30 / ARKETY
- 38 / LAKESTONE
- 44 / CEPPO
- 50 / BLENDSTONE
- 56 / PROJECT & BASIC
- 64 / TIMBERWOOD
- 70 / INSTALLATION METHODS
- 72 / ADHERING TO SUBSTRATE
- 74 / LAYING IN GRASS
- 76 / LAYING OVER GRAVEL
- 78 / LAYING IN SAND
- 80 / RAISED FLOORS WITH PEDESTALS
- 82 / DRIVEWAYS & WALKWAYS

84 / ROMEX® HARDSCAPES PRODUCT INFO

86 / TECHNICAL SPECIFICATIONS & CONTACT INFO

APPLICATION OF BLENDSTONE / TORTORA

■ BENEFITS OF PORCELAIN

BEAUTY

One of the key benefits of porcelain pavers are their aesthetic appeal. Manufactured from high-quality materials, porcelain is luxurious and attractive. The ceramic material is manufactured in a way that makes it appear nearly identical to natural stone. Porcelain pavers have a vast range of colours, shapes, textures and effects. It is easy to customise since it's a manufactured material and can even be fabricated to look like other types of flooring, such as marble or granite.

AFFORDABILITY

Porcelain is a lower-cost alternative to working with marble and other natural materials.

EASY INSTALLATION

Porcelain is lighter than concrete or natural stone pavers, making installation more manageable.

DURABILITY

Porcelain is an extremely hard and tough material. The pavers are thicker than other tiles which adds to their strength. Porcelain is resistant to most heavy impact, making it suitable for high-traffic areas and even industrial sites with heavy equipment. Porcelain can last decades if properly installed, helping you save on replacement costs. Beauty and functionality that lasts. Porcelain pavers are extremely frost resistant, improving the safety of walkways in cold weather.

EASY CLEANING

Porcelain is stain-resistant and is very easy to clean and maintain. Porcelain is naturally stain resistant, and even more so when glazed. Since it's less porous than other materials, porcelain is easy to wipe off and keep clean. Porcelain pavers can perform better than most paving options when it comes to moisture exposure. Porcelain is an ideal option as it is denser and less porous making moisture almost impossible to seep through.

TRACTION

The unique material offers superb traction making it perfect for swimming pools, decks, or walkways in areas subject to rain or water.

PERFORMANCE ■



EASY TO INSTALL



HEAT AND FROST RESISTANT



STRONG AND DURABLE



STAIN RESISTANT



EASY TO CLEAN



CHEMICAL RESISTANT



VERSATILE INSTALLATION



ANTI-SLIP PERFORMANCE



LOW MAINTENANCE

■ APPLICATIONS



WALKWAYS & DRIVEWAYS



LADDER STEPPING



PLAZA & PAVILIONS



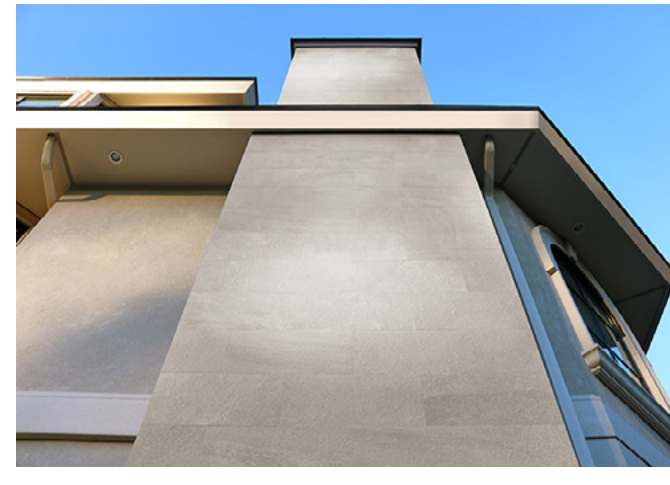
SWIMMING POOLS



DECKS



HIGH TRAFFIC PUBLIC AREAS



EXTERIOR WALLS



WATER FEATURES



48X48 COLLECTIONS

APPLICATION OF STONELAND / GREY

ASPHALT COLLECTION ■

APPLICATION OF ASPHALT / GRIT

ASPHALT

COLLECTION

THICKNESS / 2CM
SIZE 48 X 48 INCHES



ANTI-SLIP RATING / R11
EN 14411 ANNEX G GROUP BLA ISO 13600 ANNEX G GROUP BLA

R11



5228 ASPHALT WHITE ANTI-SLIP
48 X 48



5225 ASPHALT GRIT ANTI-SLIP
48 X 48



5229 ASPHALT MUD ANTI-SLIP
48 X 48

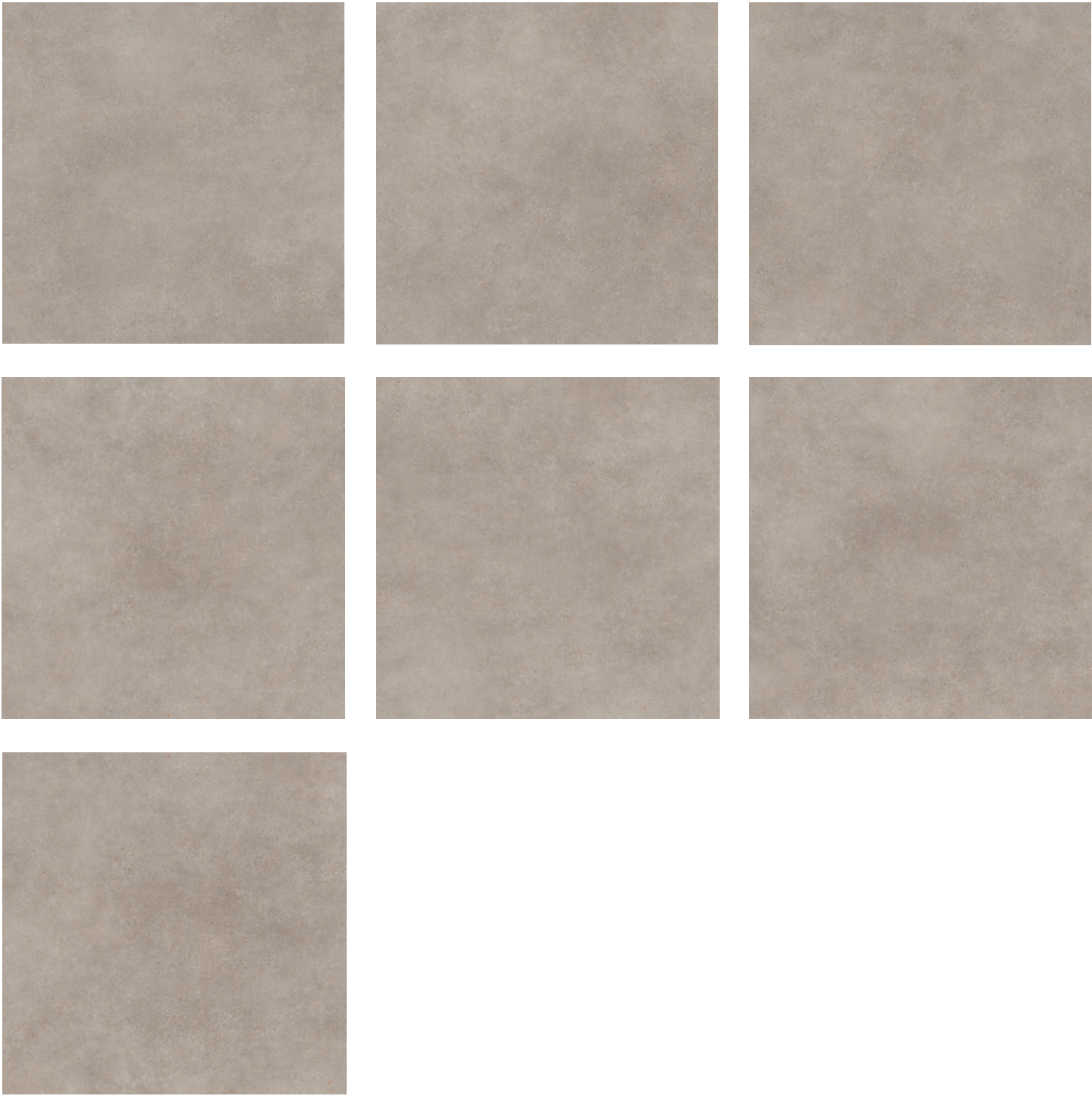


5193 ASPHALT FUME ANTI-SLIP
48 X 48



APPLICATION OF ASPHALT / MUD

THIS COLLECTION CONTAINS
7 NON-REPEATING TILE FACE VARIATIONS / SIZE 48 X 48 INCHES



PACKAGING INFO

Collection	Product Code	Product Name	Size (inches)	Square Feet per Box	Pieces per Box	kg per Box	Boxes per Pallet	Pallet
ASPHALT	5228	Asphalt White Anti-Slip	48x48	15.5sqft	1	65kg	18	279sqft
	5225	Asphalt Grit Anti-Slip	48x48	15.5sqft	1	65kg	18	279sqft
	5229	Asphalt Mud Anti-Slip	48x48	15.5sqft	1	65kg	18	279sqft
	5193	Asphalt Fume Anti-Slip	48x48	15.5sqft	1	65kg	18	279sqft

STONELAND COLLECTION

APPLICATION OF STONELAND / PEARL

STONELAND

COLLECTION

THICKNESS / 2CM
SIZE 48 X 48 INCHES



ANTI-SLIP RATING / R11
EN 14411 ANNEX G GROUP BLA ISO 13600 ANNEX G GROUP BLA

R11



5227 STONELAND PEARL ANTI-SLIP
48 X 48



5226 STONELAND IVORY ANTI-SLIP
48 X 48



5230 STONELAND GREY ANTI-SLIP
48 X 48

* SPECIAL ORDER



APPLICATION OF STONELAND / GREY

THIS COLLECTION CONTAINS
7 NON-REPEATING TILE FACE VARIATIONS / SIZE 48 X 48 INCHES



PACKAGING INFO

Collection	Product Code	Product Name	Size (inches)	Square Feet per Box	Pieces per Box	kg per Box	Boxes per Pallet	Pallet
STONELAND	5227	Stoneland Pearl Anti-Slip	48x48	15.5sqft	1	65kg	18	279sqft
	5226	Stoneland Ivory Anti-Slip	48x48	15.5sqft	1	65kg	18	279sqft
	5230	Stoneland Grey Anti-Slip	48x48	15.5sqft	1	65kg	18	279sqft

24X24 & 24X48 COLLECTIONS

APPLICATION OF ARKETY / LIGHT GREY

ARK COLLECTION ■

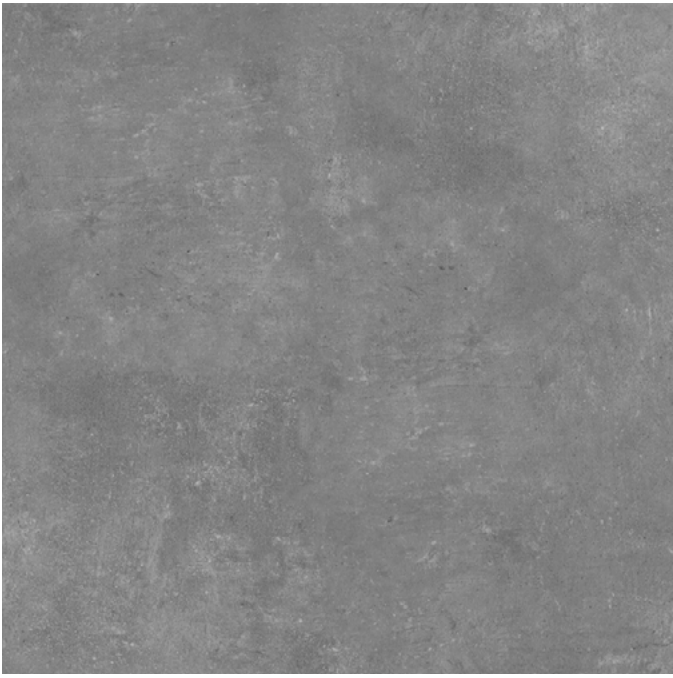
APPLICATION OF ARK / IVORY



8506 ARK IVORY / 24 X 24



8505 ARK SILVER / 24 X 24



8504 ARK ANTHRACITE / 24 X 24



8508 ARK BLACK / 24 X 24



APPLICATION OF ARK / SILVER

ARK
COLLECTION

THICKNESS / 2CM
SIZES / 24 X 48 / 24 X 24 INCHES



8500 ARK IVORY / 24 X 48



8501 ARK SILVER / 24 X 48



8502 ARK ANTHRACITE / 24 X 48



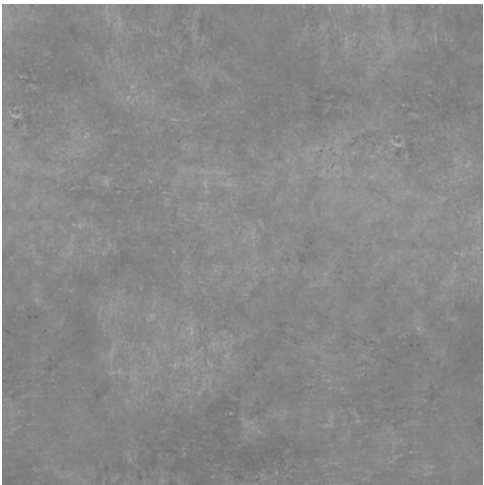
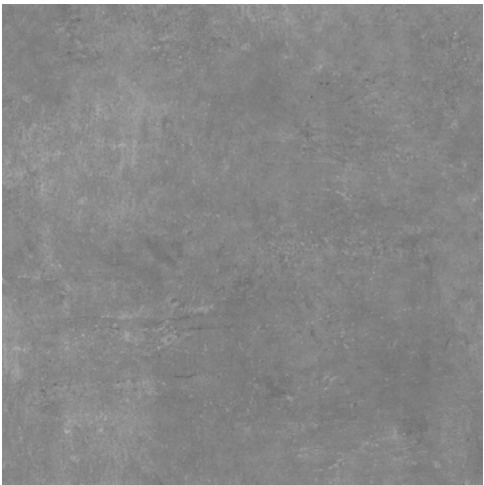
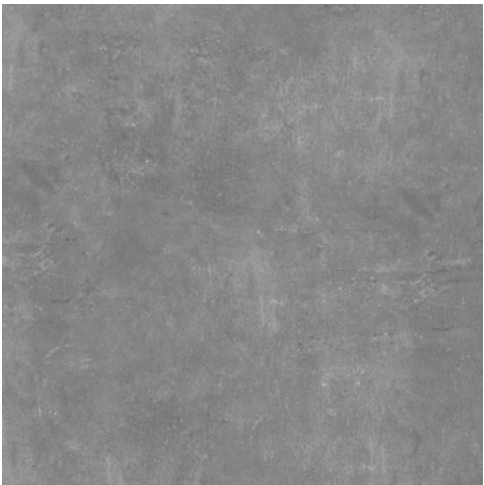
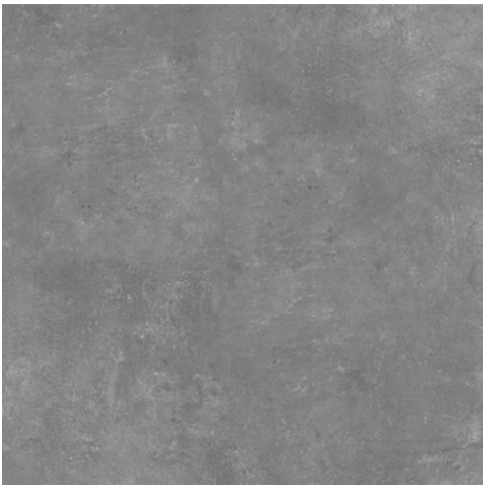
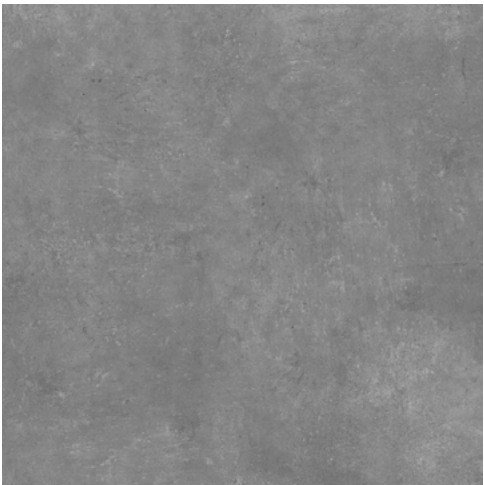
8503 ARK BLACK / 24 X 48

ANTI-SLIP RATING / R11
EN 14411 ANNEX G GROUP BLA ISO 13600 ANNEX G GROUP BLA

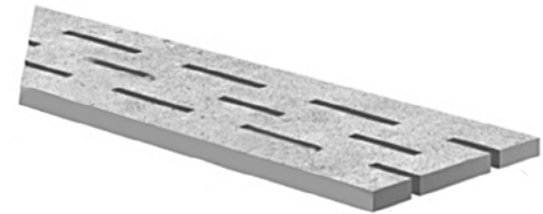


APPLICATION OF ARK / BLACK

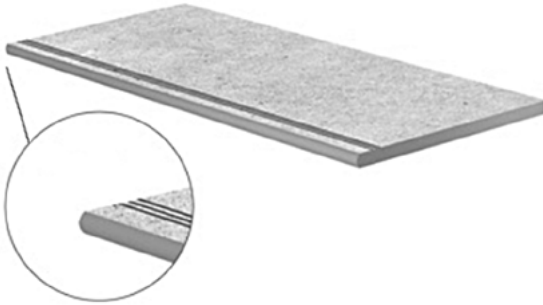
THIS COLLECTION CONTAINS
10 NON-REPEATING TILE FACE VARIATIONS / SIZE 24 X 24 INCHES
6 NON-REPEATING TILE FACE VARIATIONS / SIZE 24 X 48 INCHES



ACCESSORY PIECES



POOL FRAME DRAINAGE TILE
(SPECIAL ORDER ITEM)
2CM THICKNESS
6" X 24" / 8" X 24"



STAIR PIECE
ANTI-SLIP TREAD
2CM THICKNESS
12" X 48"



CUSTOM ORDER (ALL COLORS)
SIZE 12" X 24"
2CM THICKNESS

ALLOW 12 WEEKS MINIMUM FOR DELIVERY

PACKAGING INFO

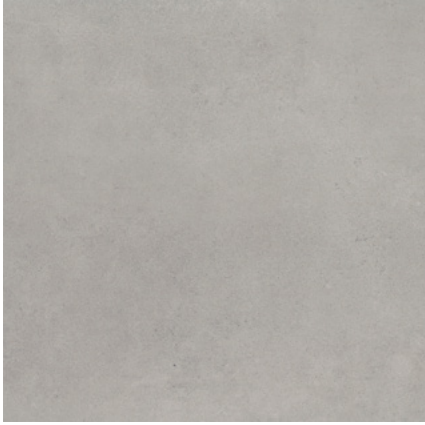
Collection	Product Code	Product Name	Size (inches)	Square Feet per Box	Pieces per Box	kg per Box	Boxes per Pallet	Pallet
ARK	8500	Ark Ivory	24X48	7.75sqft	1	32kg	32	217sqft
	8506	Ark Ivory	24X24	7.75sqft	2	32kg	32	248sqft
	8509	Stair Piece Ark Ivory	12X48	-	2	29kg	32	64psc
	8501	Ark Silver	24X48	7.75sqft	1	32kg	32	217sqft
	8505	Ark Silver	24X24	7.75sqft	2	32kg	32	248sqft
	8510	Stair Piece Ark Silver	12X48	-	2	29kg	32	64psc
	8502	Ark Anthracite	24X48	7.75sqft	1	32kg	32	217sqft
	8504	Ark Anthracite	24X24	7.75sqft	2	32kg	32	248sqft
	8511	Stair Piece Ark Anthracite	12x48	-	2	29kg	32	64psc
	8503	Ark Black	24x48	7.75sqft	1	32kg	32	217sqft
	8508	Ark Black	24x24	7.75sqft	2	32kg	32	248sqft
	8512	Stair Piece Ark Black	12x48	-	2	29kg	32	64psc

ARKETY COLLECTION ■

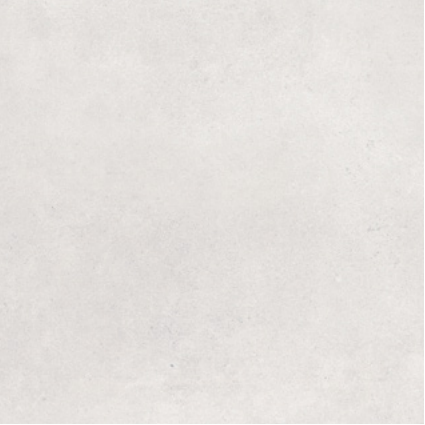
APPLICATION OF ARKETY / SILVER



1220 ARKETY IVORY
24 X 24



1203 ARKETY SILVER
24 X 24



1204 ARKETY LIGHT GREY
24 X 24



1205 ARKETY DARK GREY
24 X 24



1207 ARKETY BLACK
24 X 24



APPLICATION OF ARKETY / LIGHT GREY

ARKETY

COLLECTION

THICKNESS / 2CM
SIZES / 24 X 24 / 24 X 48 INCHES

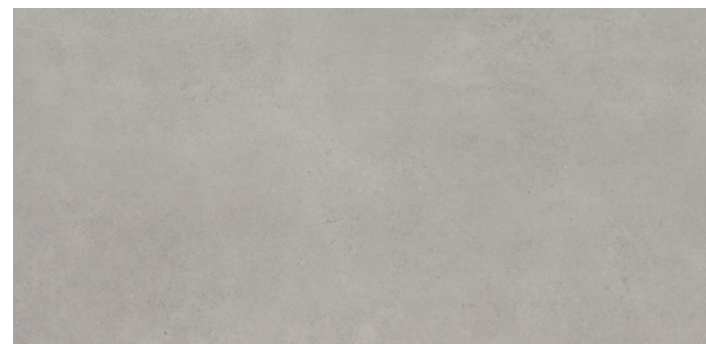


ANTI-SLIP RATING / R11
EN 14411 ANNEX G GROUP BLA ISO 13600 ANNEX G GROUP BLA

R11



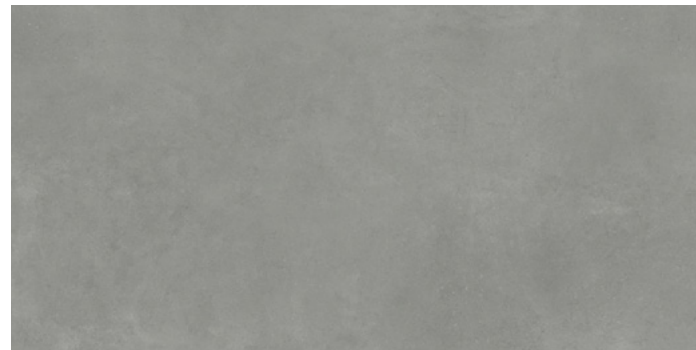
1221 ARKETY IVORY / 24 X 48



1215 ARKETY SILVER / 24 X 48



1216 ARKETY LIGHT GREY / 24 X 48



1217 ARKETY DARK GREY / 24 X 48

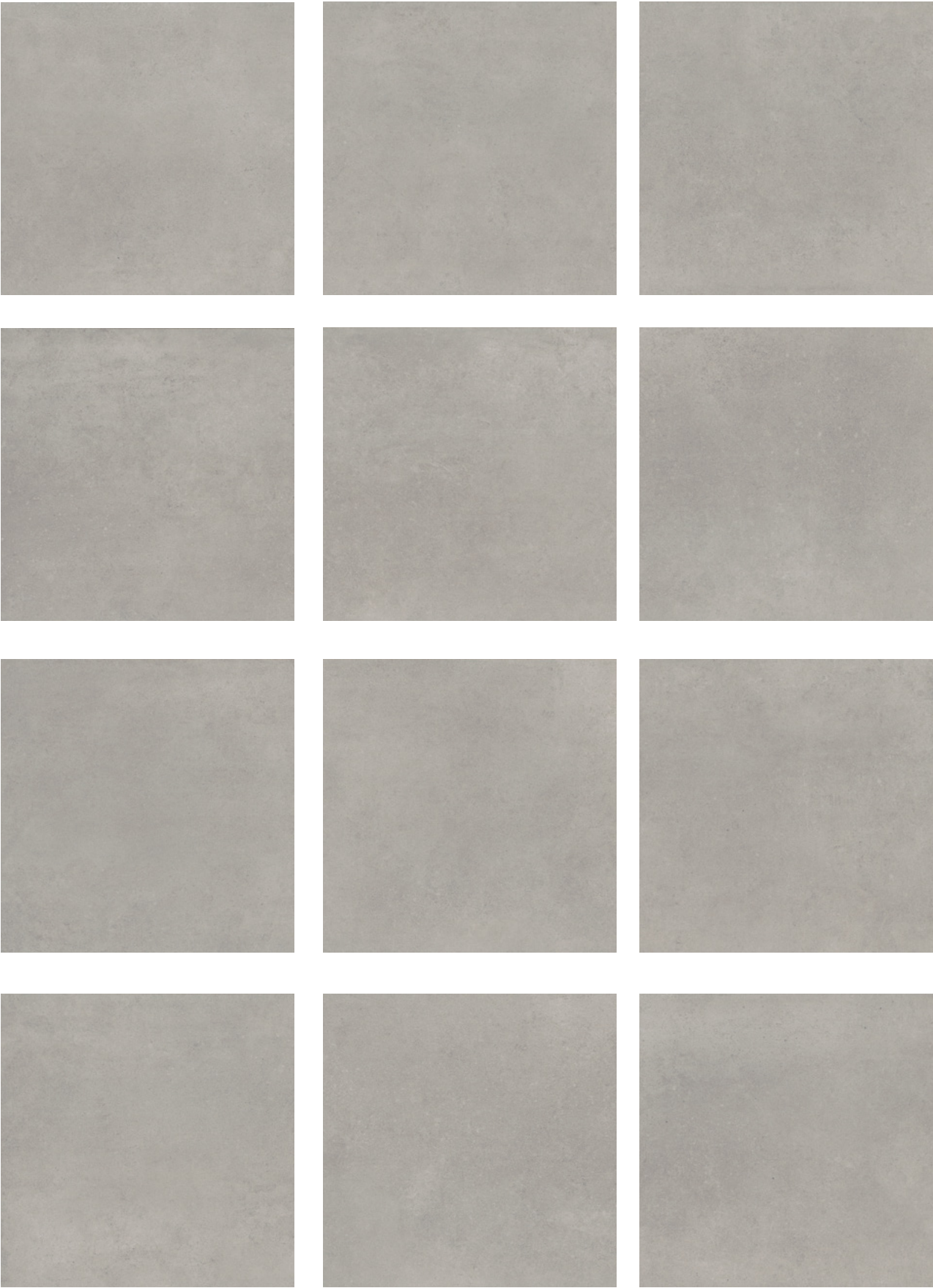


1218 ARKETY BLACK / 24 X 48

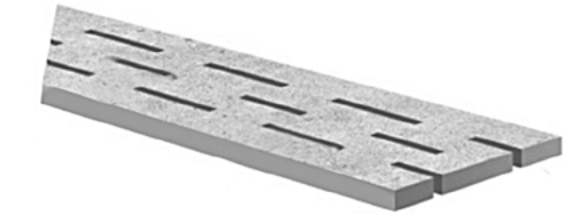


APPLICATION OF ARKETY / BLACK

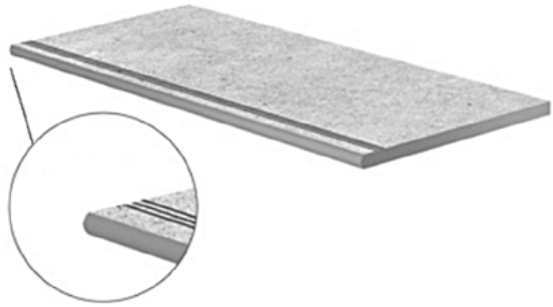
THIS COLLECTION CONTAINS
12 NON-REPEATING TILE FACE VARIATIONS / SIZE 24 X 24 INCHES



ACCESSORY PIECES



POOL FRAME DRAINAGE TILE
(SPECIAL ORDER ITEM)
2CM THICKNESS
6" X 24" / 8" X 24"



STAIR PIECE
ANTI-SLIP TREAD
2CM THICKNESS
12" X 24"
12" X 48"

PACKAGING INFO

Collection	Product Code	Product Name	Size (inches)	Square Feet per Box	Pieces per Box	kg per Box	Boxes per Pallet	Pallet
ARKETY	1221	Arkety Ivory	24X48	7.75sqft	1	36kg	36	279.00sqft
	1220	Arkety Ivory	24X24	7.75sqft	2	34kg	36	279.00sqft
	1222	Stair Piece Arkety Ivory	12X24	-	2	17kg	72	144pcs
	1232	Stair Piece Arkety Ivory	12X48	-	2	29kg	36	72pcs
	1237	Bullnose Piece Arkety Ivory	12X48	-	2	29kg	36	72pcs
	1215	Arkety Silver	24X48	7.75sqft	1	34kg	36	279.00sqft
	1203	Arkety Silver	24X24	7.75sqft	2	34kg	36	279.00sqft
	1214	Stair Piece Arkety Silver	12X24	-	2	17kg	72	144pcs
	1228	Stair Piece Arkety Silver	12X48	-	2	29kg	36	72pcs
	1233	Bullnose Piece Arkety Silver	12X48	-	2	29kg	36	72pcs
	1216	Arkety Light Grey	24X48	7.75sqft	1	34kg	36	279.00sqft
	1204	Arkety Light Grey	24X24	7.75sqft	2	34kg	36	279.00sqft
	1213	Stair Piece Arkety Light Grey	12X24	-	2	17kg	72	144pcs
	1229	Stair Piece Arkety Light Grey	12X48	-	2	29kg	36	72pcs
	1234	Bullnose Piece Arkety Light Grey	12X48	-	2	29kg	36	72pcs
	1217	Arkety Dark Grey	24X48	7.75sqft	1	34kg	36	279.00sqft
	1205	Arkety Dark Grey	24X24	7.75sqft	2	34kg	36	279.00sqft
	1212	Stair Piece Arkety Dark Grey	12x24	-	2	17kg	72	144pcs
	1230	Stair Piece Arkety Dark Grey	12X48	-	2	29kg	36	72pcs
	1235	Bullnose Piece Arkety Dark Grey	12X48	-	2	29kg	36	72pcs
	1218	Arkety Black	24X48	7.75sqft	1	34kg	36	279.00sqft
	1207	Arkety Black	24X24	7.75sqft	2	34kg	36	279.00sqft
	1219	Stair Piece Arkety Black	12X24	-	2	17kg	72	144pcs
	1231	Stair Piece Arkety Black	12X48	-	2	29kg	36	72pcs
	1236	Bullnose Piece Arkety Black	12X48	-	2	29kg	36	72pcs

LAKESTONE COLLECTION ■

APPLICATION OF LAKESTONE / DARK GREY

LAKESTONE
COLLECTION

THICKNESS / 2CM
SIZE / 24 X 24 INCHES



ANTI-SLIP RATING / R11
EN 14411 ANNEX G GROUP BLA ISO 13600 ANNEX G GROUP BLA



1200 LAKESTONE WHITE
24 X 24



1206 LAKESTONE LIGHT GREY
24 X 24



1201 LAKESTONE DARK GREY
24 X 24



1202 LAKESTONE ANTHRACITE
24 X 24

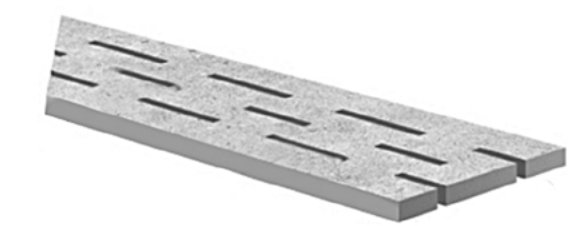


APPLICATION OF LAKESTONE / LIGHT GREY

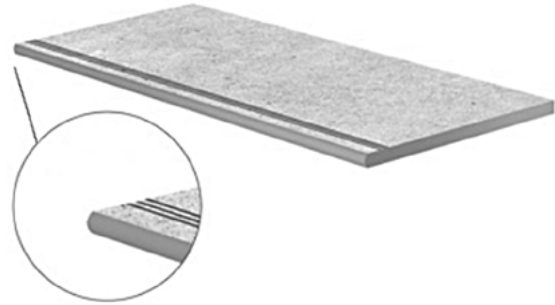
THIS COLLECTION CONTAINS
6 NON-REPEATING TILE FACE VARIATIONS / SIZE 24 X 24 INCHES



ACCESSORY PIECES



POOL FRAME DRAINAGE TILE
(SPECIAL ORDER ITEM)
2CM THICKNESS
6" X 24" / 8" X 24"



STAIR PIECE
ANTI-SLIP TREAD
2CM THICKNESS
12" X 24"



CUSTOM ORDER (ALL COLORS)
SIZE 12" X 24"
2CM THICKNESS

ALLOW 12 WEEKS MINIMUM FOR DELIVERY

PACKAGING INFO

Collection	Product Code	Product Name	Size (inches)	Square Feet per Box	Pieces per Box	kg per Box	Boxes per Pallet	Pallet
LAKESTONE	1200	Lakestone White	24x24	7.75sqft	2	34kg	36	279sqft
	1210	Stair Piece Lakestone White	12x24	-	2	17kg	72	144pcs
	1206	Lakestone Light Grey	24x24	7.75sqft	2	34kg	36	279sqft
	1209	Stair Piece Lakestone Light Grey	12x24	-	2	17kg	72	144pcs
	1201	Lakestone Dark Grey	24x24	7.75sqft	2	34kg	36	279sqft
	1208	Stair Piece Lakestone Dark Grey	12x24	-	2	17kg	72	144pcs
	1202	Lakestone Anthracite	24x24	7.75sqft	2	34kg	36	279sqft
	1211	Stair Piece Lakestone Anthracite	12x24	-	2	17kg	72	144pcs



CEPPO COLLECTION ■

APPLICATION OF CEPPO / SILVER

CEPPO

COLLECTION

THICKNESS / 2CM / 1CM
SIZE 24 X 24 INCHES



6113 CEPPO IVORY
24 X 24



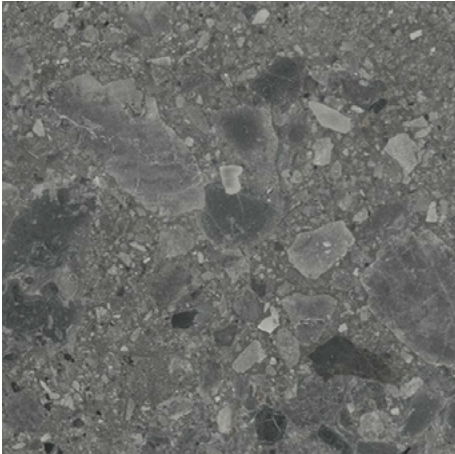
6114 CEPPO NATURAL
24 X 24



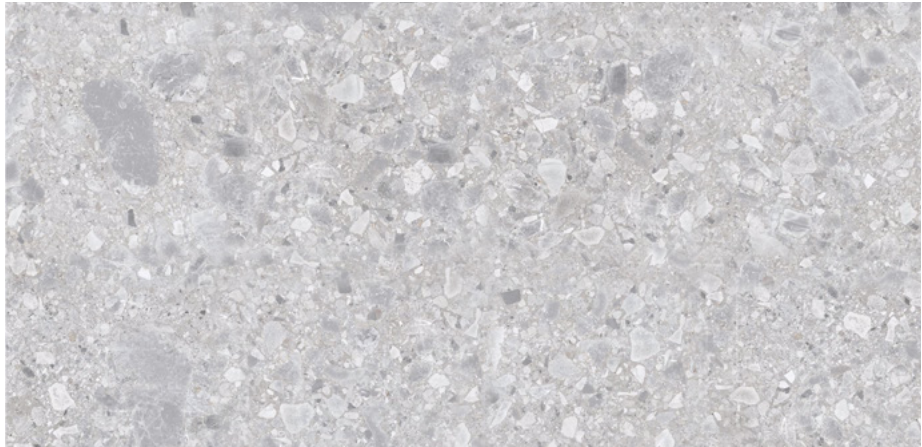
6116 CEPPO SILVER
24 X 24



6115 CEPPO GREY
24 X 24



6156 CEPPO ANTHRACITE
24 X 24



AVAILABLE FOR CEPPO
SILVER COLOR ONLY:

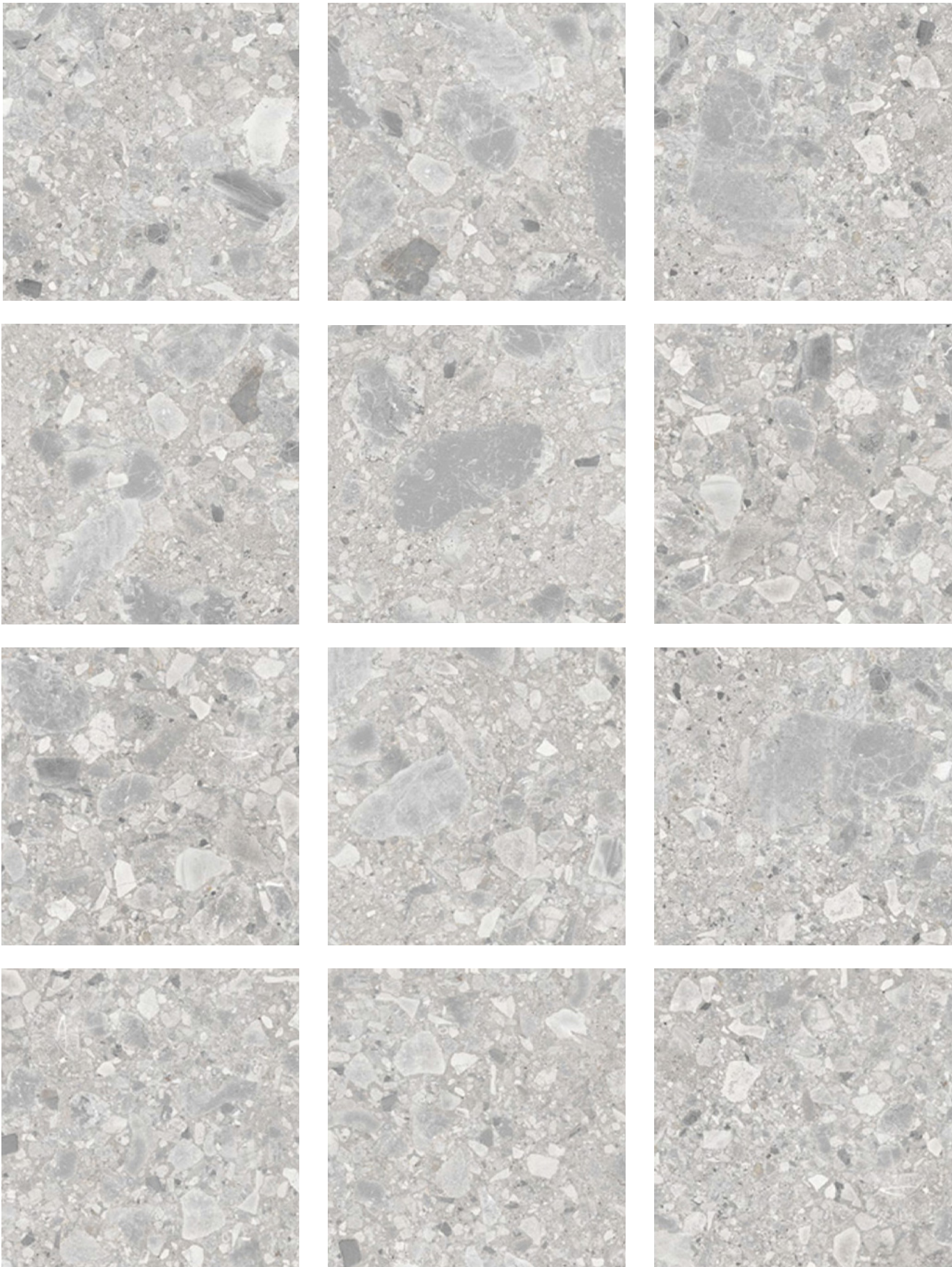
6125 CEPPO SILVER
24 X 48
PP12060

ANTI-SLIP RATING / R11
EN 14411 ANNEX G GROUP BLA ISO 13600 ANNEX G GROUP BLA

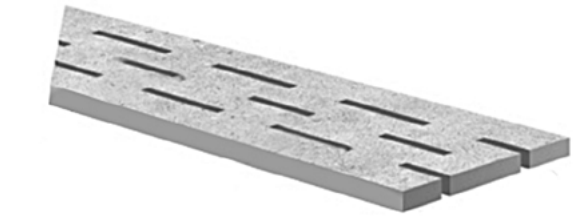


APPLICATION OF CEPPO / ANTHRACITE

THIS COLLECTION CONTAINS
12 NON-REPEATING TILE FACE VARIATIONS / SIZE 24 X 24 INCHES



ACCESSORY PIECES



POOL FRAME DRAINAGE TILE
(SPECIAL ORDER ITEM)
2CM THICKNESS
6" X 24" / 8" X 24"



CUSTOM ORDER (ALL COLORS)
SIZE 12" X 24"
2CM THICKNESS

ALLOW 12 WEEKS MINIMUM FOR DELIVERY

PACKAGING INFO

Collection	Product Code	Product Name	Size (inches)	Square Feet per Box	Pieces per Box	kg per Box	Boxes per Pallet	Pallet
CEPPO	6113	Ceppo Ivory	24x24	7.75sqft	2	34kg	36	279sqft
	6114	Ceppo Natural	24x24	7.75sqft	2	34kg	36	279sqft
	6116	Ceppo Silver	24x24	7.75sqft	2	34kg	36	279sqft
	6125	Ceppo Silver	24x48	7.75sqft	1	34kg	43	333.25sqft
	6115	Ceppo Grey	24x24	7.75sqft	2	34kg	36	279pcs
	6156	Ceppo Anthracite	24x24	7.75sqft	2	34kg	36	279sqft

BLENDSTONE

COLLECTION

APPLICATION OF BLENDSTONE ANTHRACITE

BLENDSTONE

COLLECTION

THICKNESS / 2CM
SIZE 24 X 24 INCHES



ANTI-SLIP RATING / R11
EN 14411 ANNEX G GROUP BLA ISO 13600 ANNEX G GROUP BLA

R11



1019 BLENDSTONE IVORY
24 X 24



1021 BLENDSTONE SABBIA
24 X 24



1023 BLENDSTONE TORTORA
24 X 24

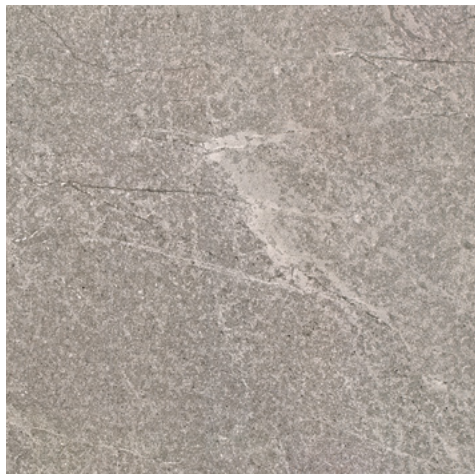


1025 BLENDSTONE ANTHRACITE
24 X 24

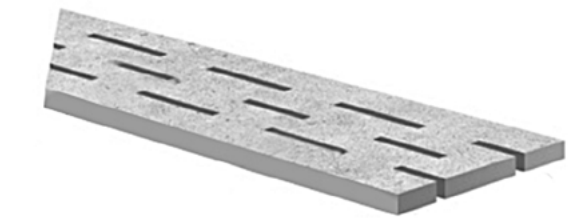


APPLICATION OF BLENDSTONE / IVORY

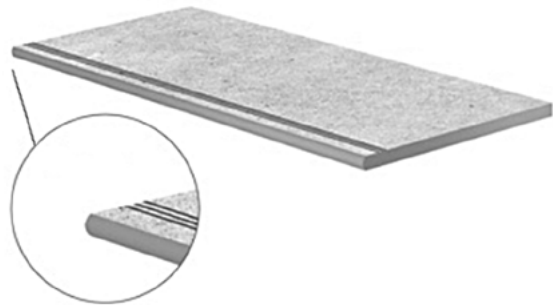
THIS COLLECTION CONTAINS
6 NON-REPEATING TILE FACE VARIATIONS / SIZE 24 X 24 INCHES



ACCESSORY PIECES



POOL FRAME DRAINAGE TILE
(SPECIAL ORDER ITEM)
2CM THICKNESS
6" X 24" / 8" X 24"



STAIR PIECE
ANTI-SLIP TREAD
2CM THICKNESS
12" X 24"



CUSTOM ORDER (ALL COLORS)
SIZE 12" X 24"
2CM THICKNESS

ALLOW 12 WEEKS MINIMUM FOR DELIVERY

PACKAGING INFO

Collection	Product Code	Product Name	Size (inches)	Square Feet per Box	Pieces per Box	kg per Box	Boxes per Pallet	Pallet
BLENDSTONE	1019	Blendstone Ivory	24x24	7.75sqft	2	34kg	36	279sqft
	1020	Stair Piece Blendstone Ivory	12x24	7.75sqft	3	25kg	72	144pcs
	1021	Blendstone Sabbia	24x24	7.75sqft	2	34kg	36	279sqft
	1022	Stair Piece Blendstone Sabbia	12x24	7.75sqft	3	25kg	72	144pcs
	1023	Blendstone Tortora	24x24	7.75sqft	2	34kg	36	279sqft
	1024	Stair Piece Blendstone Tortora	12x24	7.75sqft	3	25kg	72	144pcs
	1025	Blendstone Antracita	24x24	7.75sqft	2	34kg	36	279sqft
	1026	Stair Piece Blendstone Antracita	12x24	7.75sqft	3	25kg	72	144pcs



PROJECT & BASIC COLLECTIONS ■

APPLICATION OF PROJECT / BEIGE

PROJECT

COLLECTION

THICKNESS / 2CM
SIZE 24 X 24 / 24 X 48 INCHES
FACE VARIATIONS / 6



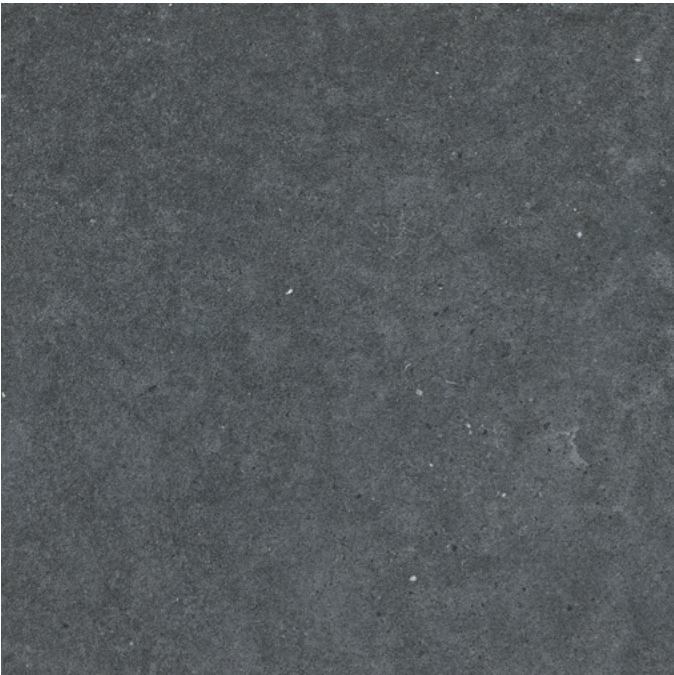
1031 PROJECT CEMENTO / 24 X 24



6112 PROJECT SILVER / 24 X 24



1027 PROJECT GRIGIO / 24 X 24



1029 PROJECT NERO / 24 X 24

ANTI-SLIP RATING / R11
EN 14411 ANNEX G GROUP BLA ISO 13600 ANNEX G GROUP BLA



APPLICATION OF PROJECT / NERO

PROJECT

COLLECTION

THICKNESS / 2CM

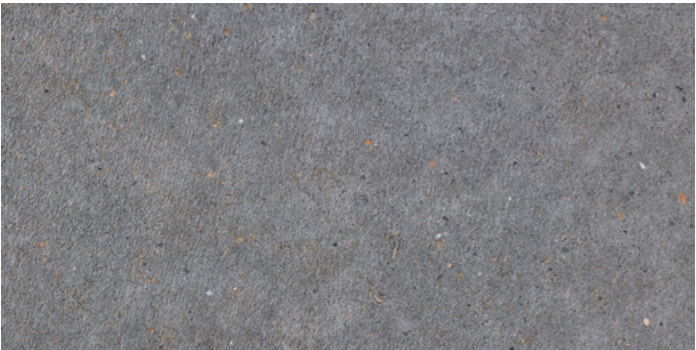
SIZES / 24 X 24 / 24 X 48 INCHES



6129 PROJECT CEMENTO / 24 X 48



6123 PROJECT SILVER / 24 X 48



6121 PROJECT GRIGIO / 24 X 48



6122 PROJECT NERO / 24 X 48

ACCESSORY PIECES



CUSTOM ORDER (ALL COLORS)
SIZE 12" X 24"
2CM THICKNESS

ALLOW 12 WEEKS MINIMUM FOR DELIVERY

PACKAGING INFO

Collection	Product Code	Product Name	Size (inches)	Square Feet per Box	Pieces per Box	kg per Box	Boxes per Pallet	Pallet
PROJECT	1027	Project Grigio	24x24	7.75sqft	2	34kg	36	279sqft
	6121	Project Grigio	24x48	7.75sqft	1	34kg	32	248sqft
	1029	Project Nero	24x24	7.75sqft	2	34kg	36	279sqft
	6122	Project Nero	24x48	7.75sqft	1	34kg	32	248sqft
	1031	Project Cemento	24x24	7.75sqft	2	34kg	36	279sqft
	6129	Project Cemento	24x48	7.75sqft	1	34kg	32	248sqft
	6112	Project Silver	24x24	7.75sqft	2	34kg	36	279sqft
	6123	Project Silver	24x48	7.75sqft	1	34kg	32	248sqft

BASIC

COLLECTION

THICKNESS / 2CM

SIZE 24 X 24 INCHES



ANTI-SLIP RATING / R11

EN 14411 ANNEX G GROUP BLA ISO 13600 ANNEX G GROUP BLA





6009 BASIC 1 / 24 X 24
FACE VARIATIONS / 10



6043 BASIC 4 / 24 X 24
FACE VARIATIONS / 1



6124 BASIC 1 / 24 X 48
FACE VARIATIONS / 5

ACCESSORY PIECES



CUSTOM ORDER (ALL COLORS)
SIZE 12" X 24"
2CM THICKNESS

ALLOW 12 WEEKS MINIMUM FOR DELIVERY

PACKAGING INFO

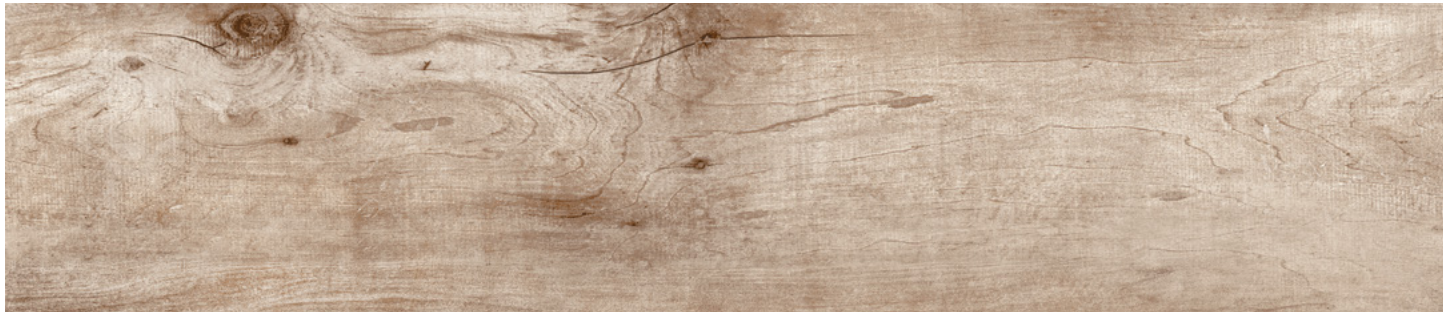
Collection	Product Code	Product Name	Size (inches)	Square Feet per Box	Pieces per Box	kg per Box	Boxes per Pallet	Pallet
BASIC	6009	Basic 1	24x24	7.75sqft	2	34kg	40	310sqft
	6124	Basic 1	24x48	7.75sqft	1	34kg	32	248sqft
	6043	Basic 4	24x24	7.75sqft	2	34kg	40	310sqft

TIMBERWOOD COLLECTION ■

APPLICATION OF TIMBERWOOD / GRIGIO

TIMBERWOOD
COLLECTION

THICKNESS / 2CM
SIZES / 12 X 48 INCHES



8533 NATURAL / 12 X 48 / PP30120



8534 GRIGIO / 12 X 48 / PP30120



8535 CHERRY / 12 X 48 / PP30120



8536 ASH / 12 X 48 / PP30120

ANTI-SLIP RATING / R11
EN 14411 ANNEX G GROUP BLA ISO 13600 ANNEX G GROUP BLA



APPLICATION OF TIMBERWOOD / NATURAL

THIS COLLECTION CONTAINS
8 NON-REPEATING TILE FACE VARIATIONS / SIZE 12 X 48 INCHES

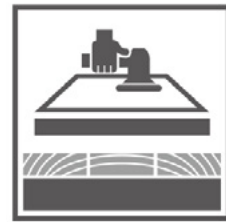
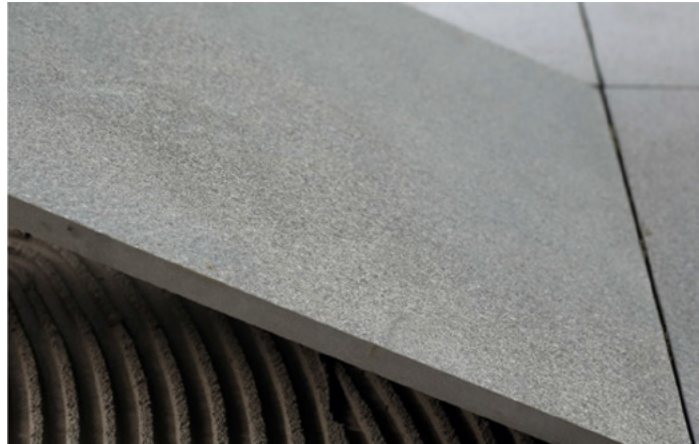


PACKAGING

Collection	Product Code	Product Name	Size (inches)	Square Feet per Box	Pieces per Box	kg per Box	Boxes per Pallet	Pallet
TIMBERWOOD	8533	Timberwood Natural	12x48	7.75sqft	2	34kg	32	248sqft
	8534	Timberwood Grigio	12x48	7.75sqft	2	34kg	32	248pcs
	8535	Timberwood Cherry	12x48	7.75sqft	2	34kg	32	248sqft
	8536	Timberwood Ash	12x48	7.75sqft	2	34kg	32	248pcs

■ INSTALLATION METHODS

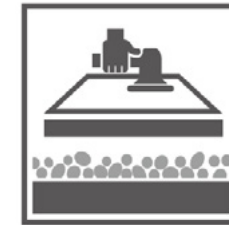
ENMON 2CM OUTDOOR PORCELAIN PAVERS ARE VERSATILE IN THEIR INSTALLATION METHODS TO SUIT ANY APPLICATION.



ADHERING TO SUBSTRATE



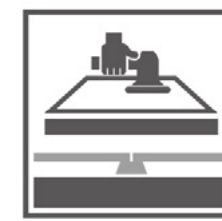
LAYING IN GRASS



LAYING OVER GRAVEL



LAYING IN SAND



RAISED FLOOR WITH PEDESTALS.
Please refer to our Adjustable Height Pedestal Catalog for more information on this smethod.

ADHERING TO SUBSTRATE



INSTALLATION GUIDE:

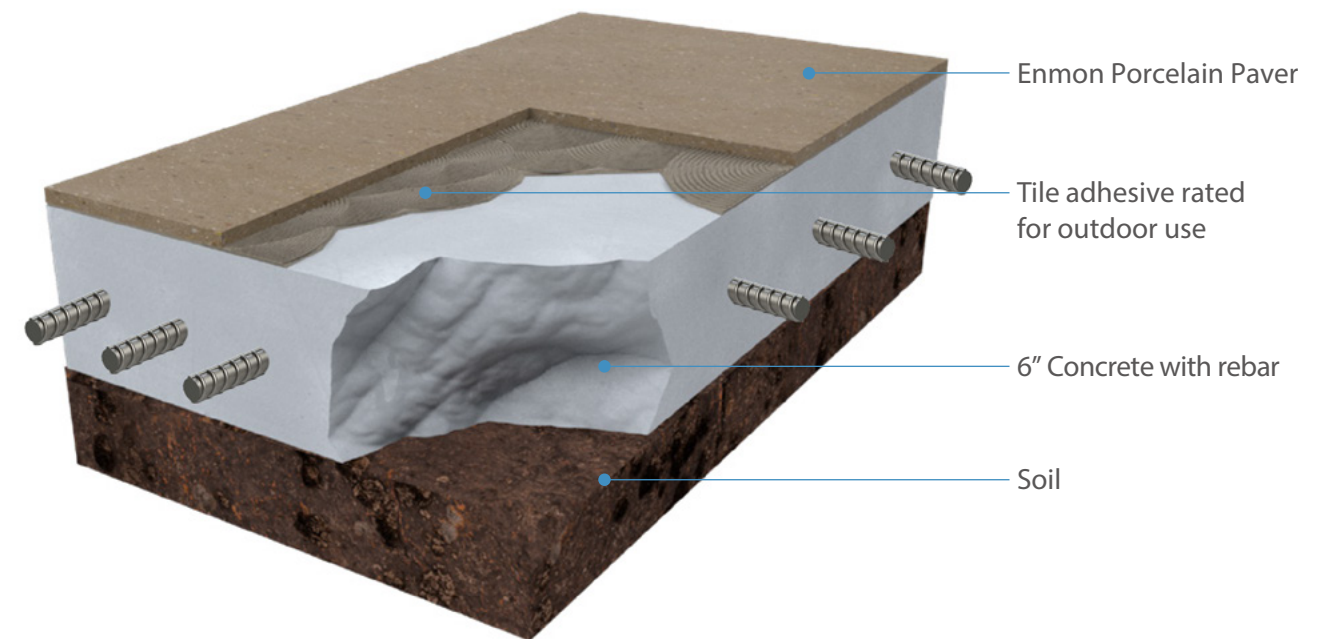
Remove top soil to achieve desired depth.
Roughly level the area.

Pour concrete mix to achieve a 6" thickness and
reinforce with rebar. Allow to dry.

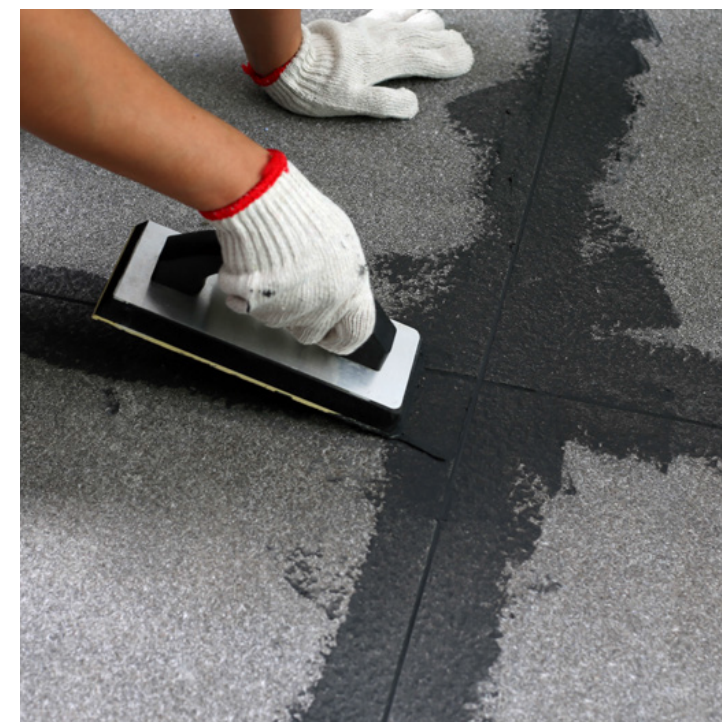
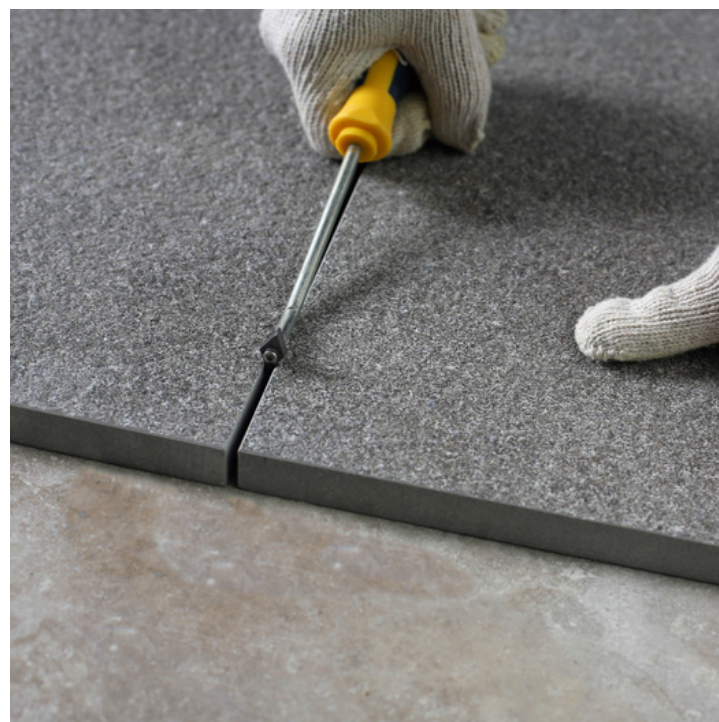
Clean the concrete surface and check that the entire
area is dry and flat. Apply an adhesive rated for outdoor
use (we recommend using the Romex® Adhesion Thinset)
evenly to substrate and to the back of the porcelain
paver using proper tools and technique.

Place the Enmon porcelain paver and tap lightly with
a rubber mallet to bleed air and ensure full adhesion.
Ensure a minimum of 1/8" gap between tiles is
maintained using the appropriate spacers.

Once the adhesive has dried, remove the spacers.
Grout the joints (we recommend Romex Jointing Mortar)
and thoroughly clean to remove any residue on tiles.



Simulated diagrams and installation guides are for reference only.
Please analyze the unique requirements of each application
and/or consult a professional to adhere to technical standards.



LAYING IN GRASS



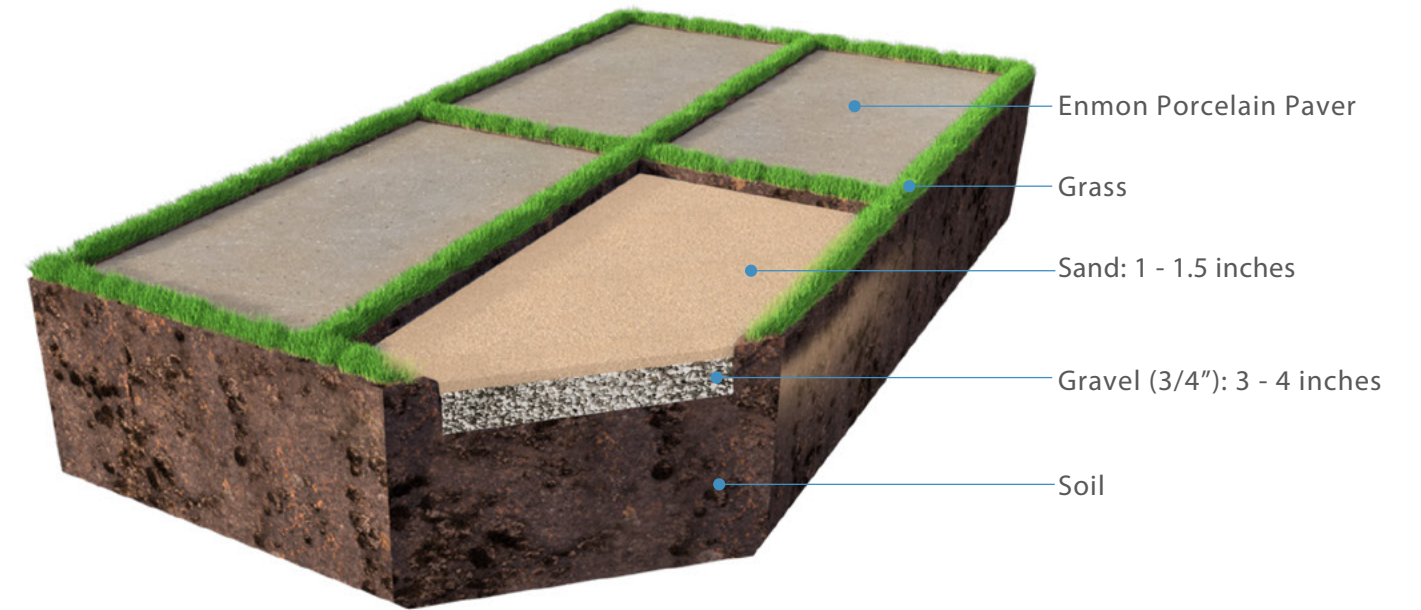
INSTALLATION GUIDE:

Place Enmon porcelain pavers on the grass and check that the gap between them is the same over the entire laying area.

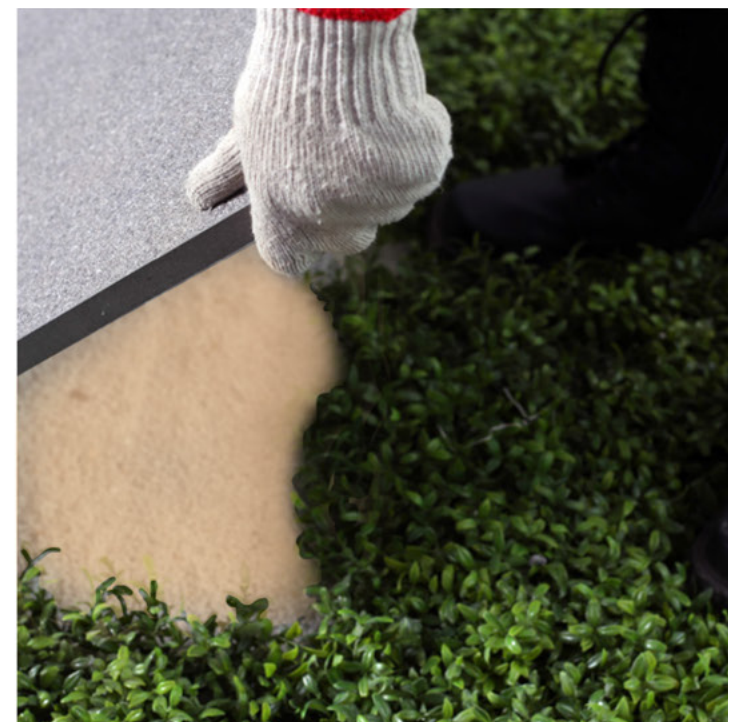
Mark out the area of turf to be removed and dig out a depth of at least 5 inches. Create a layer of at least 3 inches of gravel (diam. 3/4"). Compact and level the gravel.

Lay sand in a layer at least 1 inch deep until the space left between this layer and the surface of the ground is 2cm (thickness of the tile). Compact and level the sand.

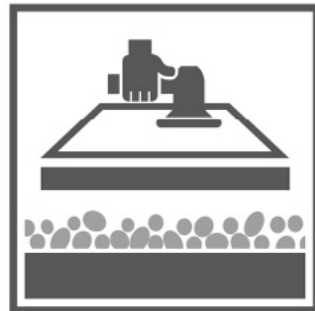
Put the Enmon porcelain paver in place and tap down gently with a rubber mallet to settle them into place and correct any unevenness.



Simulated diagrams and installation guides are for reference only.
Please analyze the unique requirements of each application
and/or consult a professional to adhere to technical standards.



LAYING OVER GRAVEL

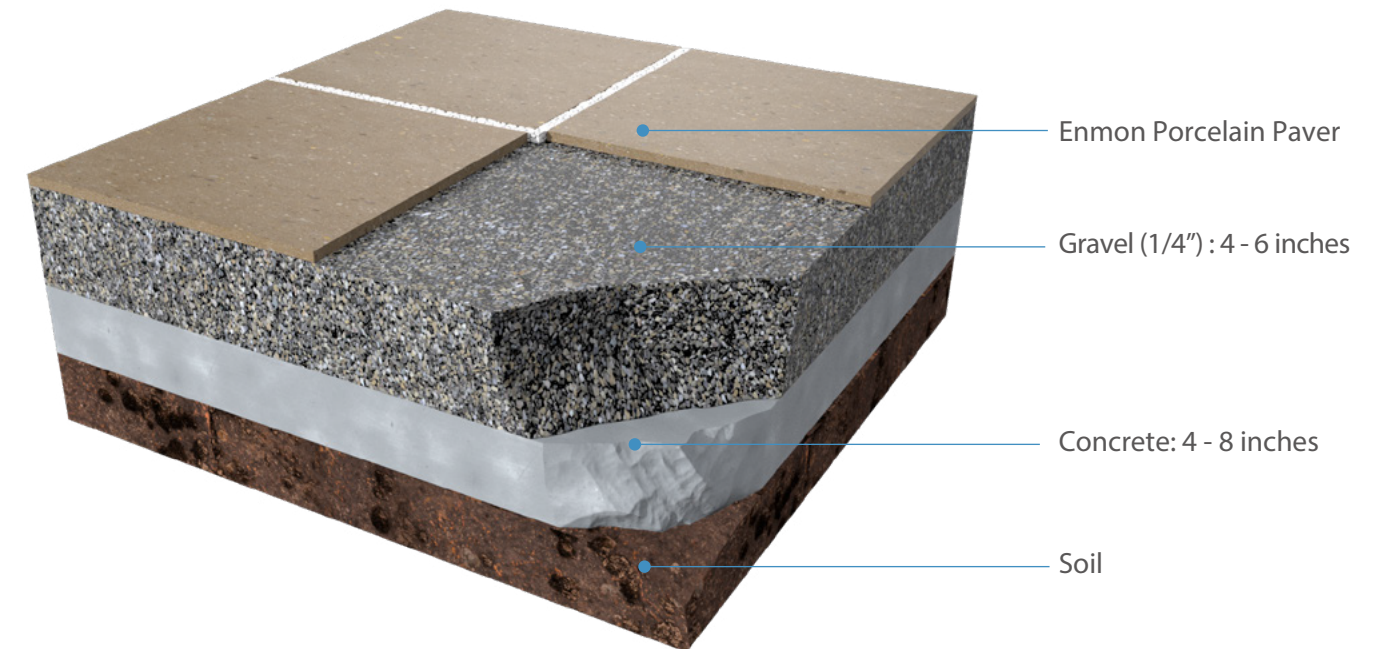


INSTALLATION GUIDE:

Create a layer of at least 4 inches of gravel with a diameter of 1/4" on the existing substrate. Compact the gravel and level the surface with a straightedge and check for even flatness.

Place the Enmon porcelain paver on the gravel and check that the gap between them is the same over the entire laying surface. Tap down gently with a rubber mallet to settle them into place and eliminate any unevenness.

Add gravel in the joints to level the paving. Decorative gravel that is larger in diameter can be used instead of what was used for substrate.



Simulated diagrams and installation guides are for reference only.
Please analyze the unique requirements of each application
and/or consult a professional to adhere to technical standards.



LAYING IN SAND



INSTALLATION GUIDE:

Remove at least 6 - 8 inches of topsoil.

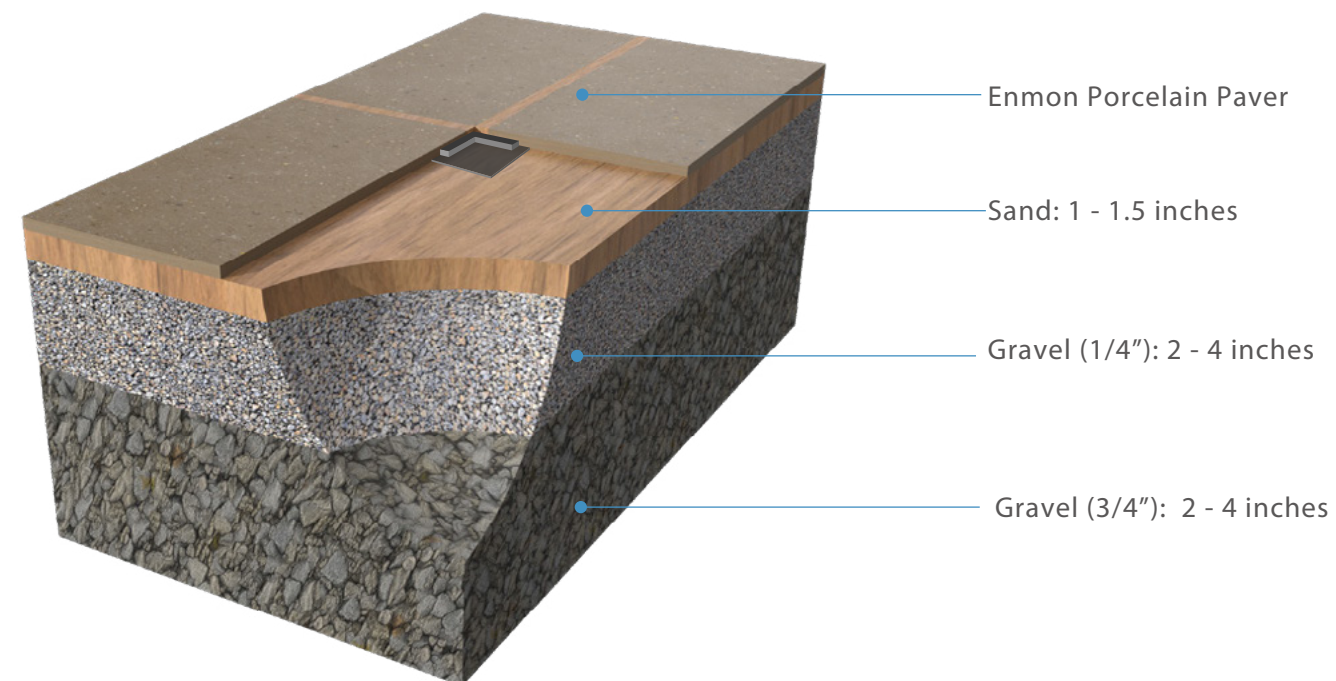
Lay 2-4 inches of 3/4" gravel. Compact and level. Lay 2 - 4 inches of 1/4" gravel. Compact and level.

Prepare a layer of sand at least 1 inch thick on the existing substrate. Level the surface with a straightedge and check for even flatness.

Place the Enmon porcelain pavers on the sand and use spacers (minimum size 3.5 mm) to ensure an even gap over the entire laying surface.

Tap down gently with a rubber mallet to settle the pavers into place.

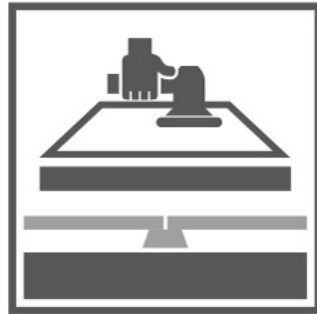
Add sand in the joints to the level the paving. Clean the surface of the slabs.



Simulated diagrams and installation guides are for reference only. Please analyze the unique requirements of each application and/or consult a professional to adhere to technical standards.



RAISED FLOORS WITH PEDESTALS



INSTALLATION GUIDE:

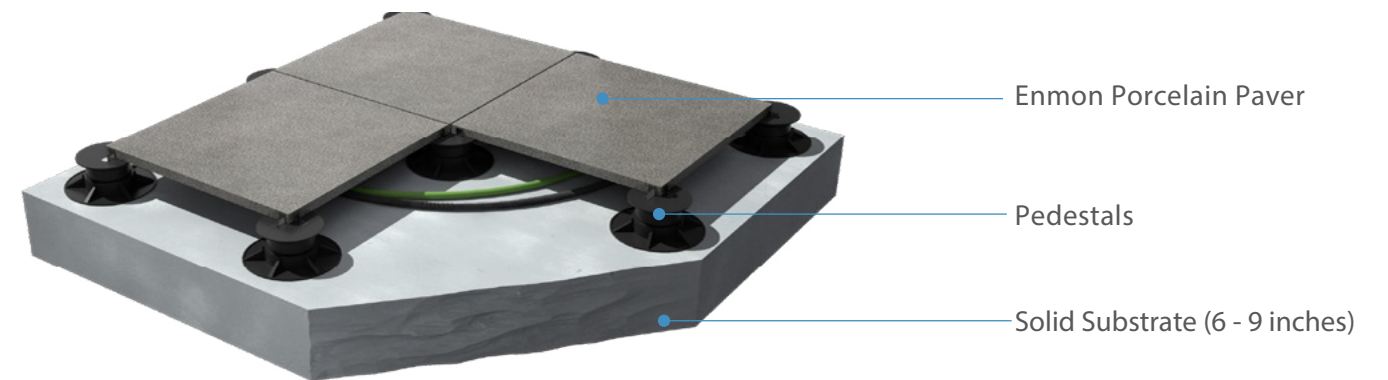
Clean the existing surface and check that the solid substrate is level to the right type of pedestal. If substrate is concrete it must be dry and cured.

Prepare the chosen pedestals, cutting the ones around the edge to size and removing any unwanted "wings".

Arrange the grid of pedestals in accordance with the laying diagram, starting with those around the edge. If there is a slope you can use Enmon plastic slope correctors or shims.

Fit the protective edge clips on the pedestals against any wall. Lay the porcelain tile on the pedestals.

Pedestals should be placed every two feet regardless of the size of slab. In addition to placing slabs in all 4 corners, add a pedestal in the middle of a slab, removing spacer wings if heavy loads are expected.



Simulated diagrams and installation guides are for reference only.
Please analyze the unique requirements of each application
and/or consult a professional to adhere to technical standards.

Please refer to our Adjustable Height Pedestal Catalog for more detailed information on this method and available products.



DRIVEWAYS & WALKWAYS



INSTALLATION GUIDE:

Lay ¾" Clear Aggregate ASTM #57.

Pour the ROMEX TRASS BED to achieve a thickness of 4-10 cm / 1.5" – 4" deep, depending on expected loads. Ensure consistent base height using an altimeter/ laser level/ string line and or screed bars.

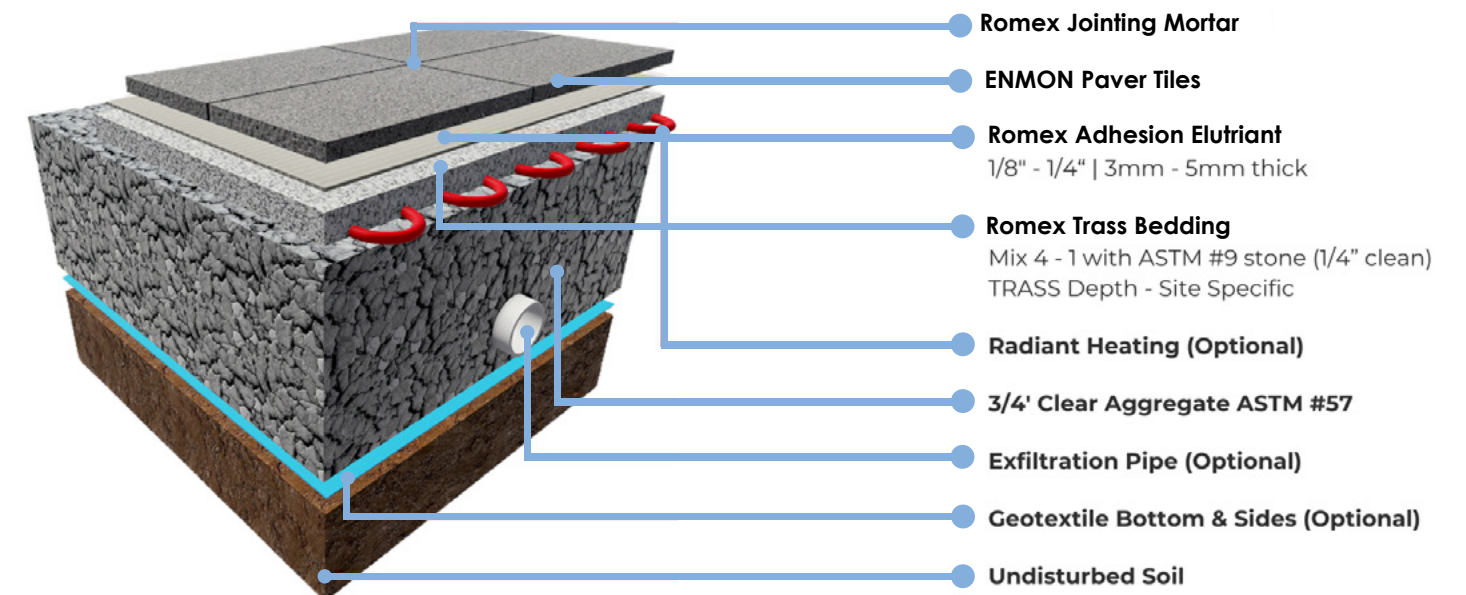
Maintain specified TRASS depth throughout to avoid compromising anticipated loads or quantity shortages. Set string lines for squareness when setting first stones.

Set screed bars using TRASS bedding only. Lay/screed out the ready-mixed TRASS loosely to the appropriate depth. Do not compact.

Apply ADHESION ELUTRIANT thinset to slightly moist Enmon porcelain paver underside with a layer thickness of 3-5 mm / 1/8"- 1/4" using a notched trowel.

Tap into freshly laid drainage mortar with a rubber mallet. Ensure a minimum of 1/8" gap between tiles is maintained using the appropriate spacers. Scrape off excess product around stone edges to prevent oozing of thin set into the paver joints.

Once adhesive has dried, remove the spacers. Grout the joints with ROMEX permeable jointing sand, and thoroughly clean to remove any residue on tiles.



Simulated diagrams and installation guides are for reference only.
Please analyze the unique requirements of each application
and/or consult a professional to adhere to technical standards.



ROMEX RSG 10 Fully Bonded System is an innovative, permeable solution designed for hardscape surfaces and ideal for residential driveways. It offers a durable, long-lasting structure that allows water to seep through and be absorbed into the ground, preventing water from pooling and eliminating the risk of freeze-thaw cycles.

SYSTEM OVERVIEW

Permeable and Fully Bonded: The RSG 10 system is permeable, meaning it allows water to pass through its surface. This prevents water buildup and surface freeze, making it ideal for areas that experience snow and ice.

Durable and Vehicle-Ready: It's engineered to withstand the weight of vehicles, making it perfect for driveways. It also resists surface movement, ensuring long-term stability even under heavy loads.

10-Year Warranty: This system comes with a 10-year warranty covering both labor and materials, providing homeowners peace of mind regarding its longevity and performance.

COMPONENTS

ROMEX TRASS BED:
A high-performance bedding material that forms the foundation of the system. Known for its 50% void space, which enhances drainage, ensuring that water flows efficiently into the ground.

ADHESION ELUTRIANT:
A bonding agent that helps create a strong adhesion between the bedding layer and the tile, improving the durability and integrity of the driveway surface.

ROMEX JOINTING PRODUCTS:
These jointing compounds fill the gaps between pavers, making the surface permeable while remaining strong and resilient. They prevent weeds from growing and are pressure washer safe.

BENEFITS FOR RESIDENTIAL DRIVEWAYS

Water Permeability: The system allows water to flow through and back into the ground, eliminating standing water, reducing the chance of ice formation, and preventing freeze-thaw damage.

Durability and Strength: It's designed to handle the weight and stress of vehicles without the surface shifting or cracking, ensuring that your driveway remains level and smooth for years.

Weather Resistance: By preventing surface freezing and reducing water retention, the RSG 10 system is highly resistant to the effects of harsh weather, particularly in colder climates.

Low Maintenance: With its weed-resistant jointing products and erosion protection, homeowners spend less time on upkeep.

Long-Term Assurance: The 10-year warranty offers reassurance that the system will perform as promised, making it a sound investment for any homeowner looking for a high-quality driveway solution.

This system is ideal for homeowners who want a reliable, long-lasting, and eco-friendly driveway that can handle both the demands of vehicle traffic and changing weather conditions.



TECHNICAL SPECIFICATIONS

ALL SIZES

✕2cm

Compliant with standards EN 14411 annex G group BLA Compliant with standards ISO 13600 annex G group BLA

PROPERTIES	TEST METHOD	REQUIREMENTS	RESULTS
LENGTH AND WIDTH	ISO 10545-2	$\pm 2.0\text{mm}$ $\pm 0.6\%$	+ 0.2mm + 0.03%~+0.04%
THICKNESS	ISO 10545-2	$\pm 0.5\text{mm}$ $\pm 5\%$	0mm - 0.38%~+0.31%
WATER ABSORPTION	ISO 10545-3	$E \leq 0.5\%$ individual maximum 0.6%	0.09% 0.07%~0.10%
BREAKING STRENGTH IN (N)	ISO 10545-4	$S \geq 1300\text{ N}$	$S \geq 9993\text{N}$
ABRASION RESISTANCE	ISO 10545-7	Report cycles/Class	Passed 2100/Class 4
THERMAL SHOCK RESISTANCE	ISO 10545-9	PASS	Fully Resistant
CRAZING RESISTANCE	ISO 10545-11	PASS	Fully Resistant
FROST RESISTANCE	ISO 10545-12	PASS	Fully Resistant
SLIP RESISTANCE	DIN 51130	Declared value	22.4° Class R11
STAIN RESISTANCE	ISO 10545-14	Minimum Class 3	Class 5
HOUSEHOLD CHEMICAL RESISTANCE	ISO 10545-13	Minimum Class B	GA(V)
RESISTANCE TO LOW CONCENTRATIONS OF ACIDS & ALKALIS	ISO 10545-13	Declared value	GLA(V)
RESISTANCE TO HIGH CONCENTRATIONS OF ACIDS & ALKALIS	ISO 10545-13	Declared value	GHA(V)

ENMON
NORTH AMERICA

www.enmon.ca

